



MILTON KEYNES LPA – RURAL TEAM - PCSO C9677 DAVID HUCKLE
Contact 101

Email: david.huckle@thamesvalley.police.uk

Web: www.thamesvalley.police.uk

Police Report – Hanslope – May 2022
Crime Report / Incidents from 8th April – 8th May 2022

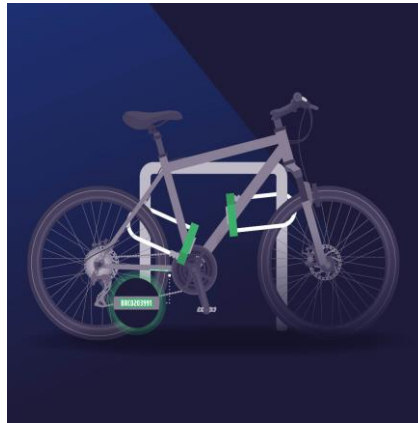
1 x Criminal Damage, 1 x ASB, 1 x Public Order, 1 x Assault without Injury, 1 x Suspicious person & Vehicle – 6 crimes reported in Hanslope during the period 08/04/22 to 08/05/22

Have Your Say Meetings - this is your opportunity to come and meet me and have a chat about any issues or concerns you may have, THE NEXT MEETING will be on **Saturday 21st May 2022** between **10:00-11:00** outside the village shop.

This Month's Crime Reduction Advice is Protect your bike from thieves

If you have ever had your bicycle stolen, you will know how upsetting it can be. Our practical tips will help keep your bike safe and out of the hands of thieves – and advice on how to get it back if it is stolen.

The most important thing to remember is, double lock your bike and register the frame number.



Ten ways to protect your bike

Follow these 10 tips to ensure your bike remains safe, secure and not a statistic.

1. Double lock it - Using two locks slows thieves down and makes your bike less of a target. Use two quality locks, at least one of which is a D-lock. Thieves are less likely to carry multiple tools, so use two different types of lock if possible.

2. Lock the lot - Lock the frame and both wheels to a secure cycle stand.

3. Secure it - Secure your bike as close to the stand as possible to give any thieves little or no room to manoeuvre.

4. Take removable parts with you - Take parts that are easy to remove with you, such as wheels, lights, baskets or the saddle, or use locking skewers or nuts which can increase security by securing the bike's components to the frame permanently.

5. Park securely - Lock your bike at recognised secure cycle parking. It should be well lit and covered by CCTV.

6. Register it - Register your frame number for free on a cycle database such as [BikeRegister](#) or [immobilise.com](#). Alternative companies can be found on the [Secured by Design website](#). The frame number is usually found underneath the bike between the pedals or where the back wheel slots in. If your bike is ever stolen and recovered by the police, it can be traced back to you.

7. Mark it - Get your bike security marked. It is a highly effective, visible deterrent to bike thieves. They know that if they are caught with a registered bike, the owner can be traced and they will be arrested. Bikeregister provide a list of police bike marking events. You can also mark your bike with SmartWater.

8. Remember safety begins at home - Take the same care to lock your bike securely at home, as you would on the street. Avoid advertising that you have a bike at home, for example, by removing car roof racks, and creating 'privacy zones' on apps like Strava to avoid disclosing your location.

9. Check ownership - Ask for proof of ownership and check the bike frame number on a cycle database such as [Bike Checker](#) at [BikeRegister](#). Alternative companies can be found on the [Secured by Design website](#).

10. Act fast - If your bike has been stolen, contact us as soon as possible by calling 101 or [reporting online](#). Give us your frame number, cycle database number, a photo and any other details and make sure you update the status on the cycle database where you registered it. The sooner we know, the sooner we can act, which might stop it being sold on.

What to do if your bike is stolen

There are various courses of action open to you if your bike goes missing. Whichever you take, make sure you do it as soon as possible. Time really is of the essence.

[Stolen Bikes in the UK](#) will help to spread the word on the theft of your bike and offer you advice to help get it back.

[Find that bike](#) lists adverts for bikes placed on online marketplaces, which you can check frequently to see if yours has been listed for sale.

Adverts are usually placed within 24 hours of the theft but if not, keep looking as they sometimes take a few months to

Thames Valley Alert Messaging

Sign up to the free community messaging system Called Thames Valley Alert This site provides an invitation for you to participate in the exchange of information with Thames Valley Police, Neighbourhood Watch and other community groups. As a registered recipient you will not only benefit from two way messaging but may also learn about those in your community subject of anti-social behaviour orders, help identify suspected or wanted criminals or learn about community groups, events or meetings in your area <https://www.thamesvalleyalert.co.uk>

Follow us on Twitter: @tvp_mk

Follow us on Facebook: TVP Milton Keynes