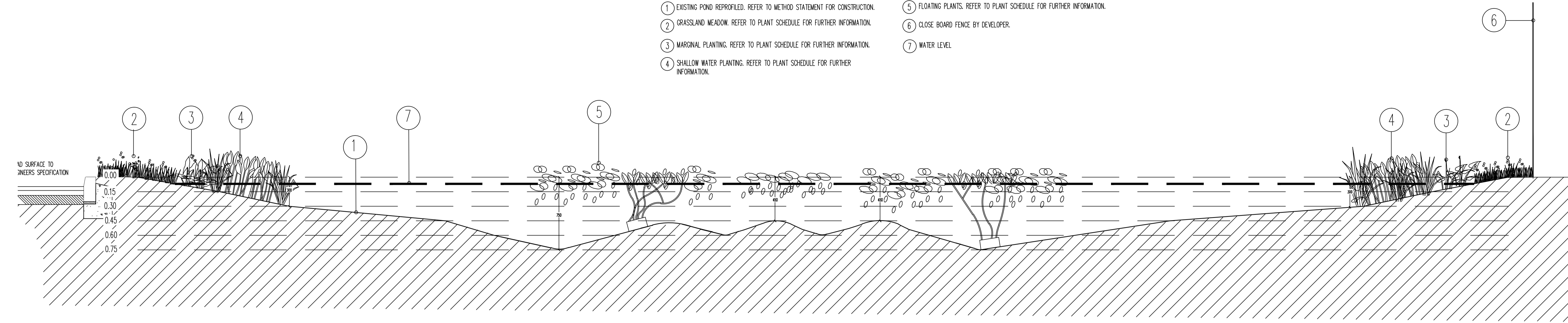


# 1:20 SECTION



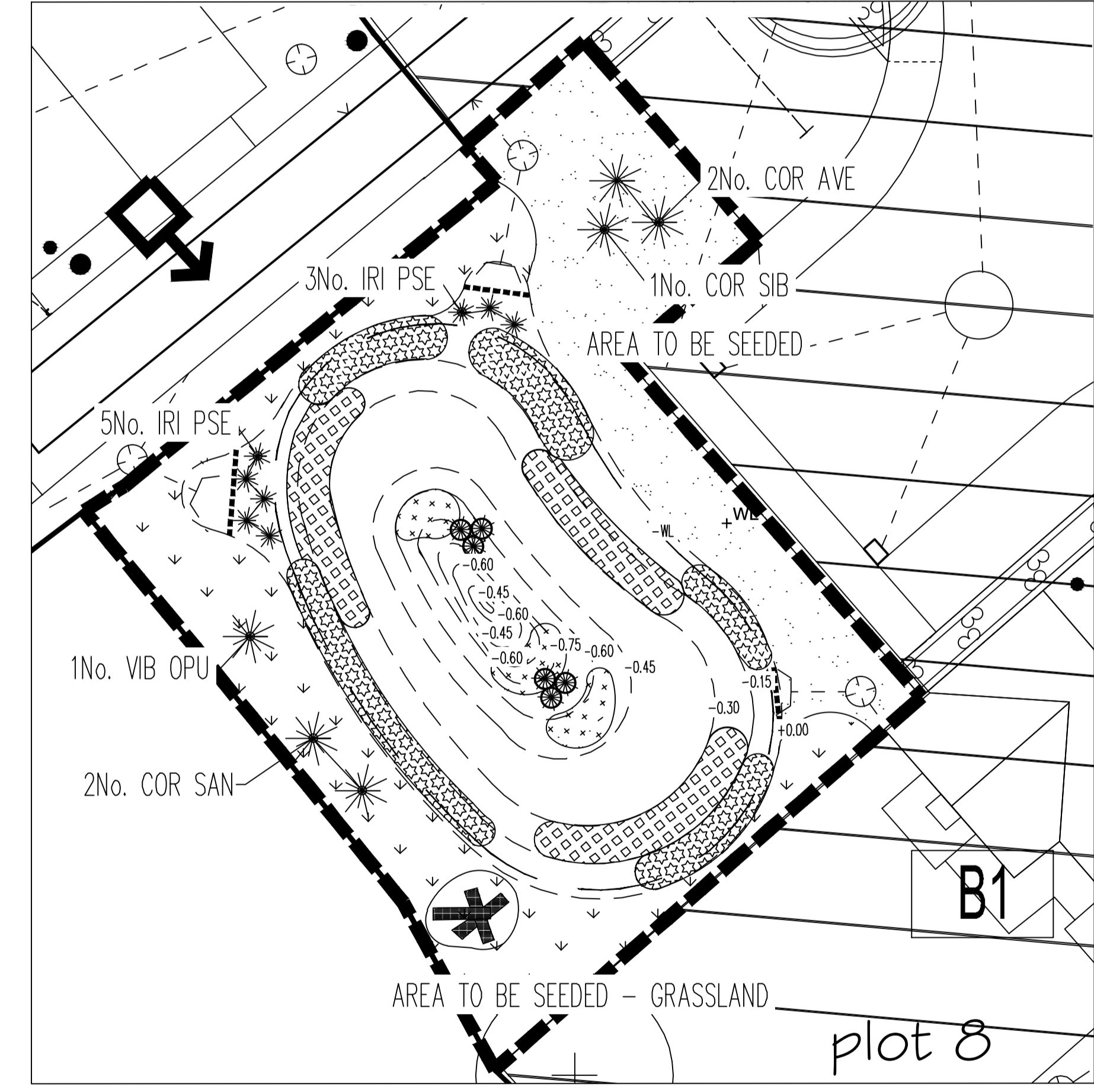
## NOTES:-

- ① EXISTING POND REPROFILED. REFER TO METHOD STATEMENT FOR CONSTRUCTION.
- ② GRASSLAND MEADOW. REFER TO PLANT SCHEDULE FOR FURTHER INFORMATION.
- ③ MARGINAL PLANTING. REFER TO PLANT SCHEDULE FOR FURTHER INFORMATION.
- ④ SHALLOW WATER PLANTING. REFER TO PLANT SCHEDULE FOR FURTHER INFORMATION.
- ⑤ FLOATING PLANTS. REFER TO PLANT SCHEDULE FOR FURTHER INFORMATION.
- ⑥ CLOSE BOARD FENCE BY DEVELOPER.
- ⑦ WATER LEVEL.

## SPECIFICATION NOTES - REFER ALSO TO THE MEASURED WORKS SCHEDULE

- A) Planting out**
- Planting out shall be set out exactly as shown on the bearing and measured from existing fixed points. All planting shall be set out using radii scribbled on the ground using the planted circles and a line between or with site marker posts. The junction between corners and concrete curbs shall be cut to form a smooth even flowing line. Check that all setting out conforms to the plan before cultivating and planting works are carried out. Failure to do so may result in rework of the work by the landscape architect and any requirements of the contractor's specification.
  - All planting beds shall be a minimum of 1.0m wide. If there is insufficient space due to the complexity of walls and path edges, ensure that the bed has space free from concrete footings before planting. The bed is sealed with concrete. Then the landscape contractor shall construct the site to the landscape architect to determine if footings are excessive and can be reduced or altered. The bed can be covered with a 100mm layer of mulch. The landscape architect shall be notified if the contractor is unable to cultivate then to the specified width at his own expense.
- B) Ground preparation**
- Pre-planting herbicide application - Apply outside spraying operation, approved herbicide, systemic herbicide to the manufacturer's instructions and to 1997 Control of Pesticides Regulations and 2002 Control of Pesticides Regulations. All herbicide applications shall be made in accordance with the manufacturer's instructions. Do not apply herbicide to any areas where a delay before planting of the area is required. Following cultivation, to allow dormant weeds to germinate, the area shall be covered with a 100mm layer of mulch. The landscape architect shall be notified if the contractor is unable to cultivate then to the specified width at his own expense.
  - Soil conditioning - Where soils are of a poor quality, the contractor shall amend the soil with a suitable soil conditioner. The contractor shall be notified if the contractor is unable to amend the soil to the specified quality at his own expense.

# 1:100 PLAN



REFER TO DETAILED LAYOUT PROPOSALS FOR PLOTS JBA 12/270-01 FOR FURTHER INFORMATION.

REFER TO SEPARATE DOCUMENT FOR METHOD STATEMENT

## KEY

- AREA OF SEEDED GRASSLAND. REFER TO SCHEDULE FOR FURTHER INFORMATION.
- CULTIVATED TURF UNLESS OTHERWISE STATED ON PLAN. SEE SPECIFICATION NOTES C5 AND E1.
- SPECIMEN SHRUBS PLANTED IN GRASS/WILDFLOWER. SPECIMEN SHRUBS IN GRASS ARE MEASURED SEPARATELY IN SCHEDULE OF QUANTITIES. SEE SPECIFICATION NOTES A1, B1-3, C1-3, D1-2 AND E1.
- WATER LILY 3 X 1L PLANT IN PLASTIC BASKET FILLED WITH PEA SHINGLE.
- MARGINAL PLANTING. REFER TO PLANT SCHEDULE FOR FURTHER DETAILS.
- SHALLOW WATER PLANTING. REFER TO PLANT SCHEDULE FOR FURTHER DETAILS.
- DEEP WATER/FLOATING PLANTING. REFER TO PLANT SCHEDULE FOR FURTHER DETAILS.
- INLET TO BE SPECIFIED BY ENGINEERS. SINGLE ROW OF SMOOTH BRICKS LAID DRY ON POND EDGE TO PREVENT THE HEAVY TRAVELING UP THE INLET.
- ECOLOGICAL ENHANCEMENT
- HIBERNULUM FOR REPTILES. MADE FROM LOCALLY SOURCED RUBBLE, LOGS AND PIECES OF DRAIN PIPE. PLACED IN 1m DEEP AND 1.5m LONG DUES TRENCH, COVERED WITH SOIL. LEAVING DRAIN PIPE FREE TO ENTER THE TOP OF THE TRENCH. SEEDED WITH WILDFLOWER MIX 'EM1'. REFER TO CONSTRUCTION INSTRUCTIONS ON WWW.CONSERVATIONEVIDENCE.COM

## SCHEDULE OF PLANTS FOR DRAWING 02 ONLY

QTY	CODE	PLANT NAME	STOCK	SHC	DFB
20No.	POT NAT	Potamogeton natans	B.R		
20No.	RAN ADA	Ranunculus aquatilis	B.R		
20No.	HYD MER	Hydrocharis morsus-ranae	B.R		
20No.	STR ALD	Stratiotes aloides	B.R		
20No.	HOT PAL	Hottonia palustris	B.R		
6No.	NM PEL	Nymphaeoides peltata	C.G 1L		

QTY	CODE	PLANT NAME	STOCK	SHC	DFB
2No.	COR AVE	Corylus avellana	C.G 10L	E	3.75
1No.	COR SIB	Cornus alba 'Sibirica'	C.G 10L	B	2.25
2No.	COR SAN	Cornus sanguinea	C.G 10L	E	2.25
8No.	IRI PSE	Irish pseudocorus	C.G 2L		
1No.	VIB OPU	Viburnum opulus	C.G 10L		

**GENERAL NOTES**

- ALL DIMENSIONS IN MILLIMETRES
- DO NOT SCALE OFF THIS DRAWING
- ALL DIMENSIONS TO BE CHECKED ON SITE

(C) JAMES BLAKE ASSOCIATES 2012

## LANDSCAPE PROGRAMMING

DUE TO NATIONAL PLANT SHORTAGE: PLANTS MAY TAKE UP TO 4 WEEKS TO BE DELIVERED. EARLY LEAD-IN FOR SOFT LANDSCAPE IS ESSENTIAL.

## HEALTH AND SAFETY RISK ASSESSMENT

ITEM	RISK LEVEL	HAZARD/RISK
EXCAVATION, CONSTRUCTION, CONNECTION AND SOIL PREPARATION NEAR EXISTING TREES WITH ON AND OFF THE SITE	MEDIUM	HAZARD TO SAFETY OF WORKERS, USERS OF ADJACENT LAND AND FUTURE USERS OF THE SITE BY DAMAGED TREES
WORKING NEAR OR ADJACENT TO EXCAVATION/UNDERGROUND SERVICES	HIGH	DAMAGE TO SERVICES AND HAZARD TO SAFETY OF WORKERS
NATIVE HERBS, PERENNIALS AND TERNARY PLANTS IN PREPARATION TO PLANTING AND CHEMICALS	LOW	HAZARD TO SAFETY OF PEDESTRIANS
USE OF PESTICIDES, HERBICIDES AND FERTILISERS	MEDIUM/HIGH	HAZARD TO SAFETY OF OPERATIVES, GENERAL PUBLIC AND THEIR PETS
USE OF LOOSE MATERIALS SUCH AS GRAVEL AND BARK MULCH ADJACENT TO PATHS AND ROADS	LOW	HAZARD TO SAFETY OF THE SITE IF BLOWN OR DISPLACED ON TO PATHS OR PATHS. IT COULD BECOME A POTENTIAL TRIP HAZARD TO VISITORS
WORKING ON SLOPING GROUND	HIGH	HAZARD TO SAFETY OF WORKERS
WORKING ON OR ADJACENT TO THE HIGHWAY	MEDIUM	HAZARD TO SAFETY OF WORKERS AND HIGHWAY USERS
WORKING NEAR A WATERCOURSE	MEDIUM	HAZARD TO SAFETY OF WORKERS AND POLLUTION OF WATERCOURSE BY HERBICIDES, PESTICIDES AND OTHER WASTE

REV.	DATE	INITIALS	DETAILS

CLIENT LODGE PARK	DWG. TITLE DETAILED HARD AND SOFT LAYOUT PROPOSAL FOR POND					
PURPOSE OF ISSUE PLANNING						
SITE LAND TO THE REAR OF 9 NEWPORT ROAD						
DRG BY JBA	CHECKED JBA	AUTH'D JBA	SCALE 1:100@A1	DATE NOV 2012	DWG NO. JBA 12/270-02	REV. 

REFER TO THE ACCOMPANYING MEASURED WORKS SCHEDULE DOCUMENT FOR MORE INFORMATION. CHANGES TO SUPPLIERS/MANUFACTURERS ARE TO BE EQUAL AND APPROVED. SUBSTITUTIONS TO SHRUB/TREE VARIETIES ARE TO BE AGREED WITH JAMES BLAKE ASSOCIATES. DO NOT SCALE FROM THIS DRAWING. ALL DIMENSIONS TO BE CHECKED ON SITE.

(C) JAMES BLAKE ASSOCIATES 2012

HEAD OFFICE  
The Black Barn, Hill Road, Lavenham, Suffolk, CO10 9GX  
Tel: (01787) 248216 Fax: (01787) 247624  
jamesblake@jba-landmarc.com  
www.jba-landmarc.com

**JBA**

LANDSCAPE ARCHITECTURE  
ARBORICULTURE & ECOLOGY